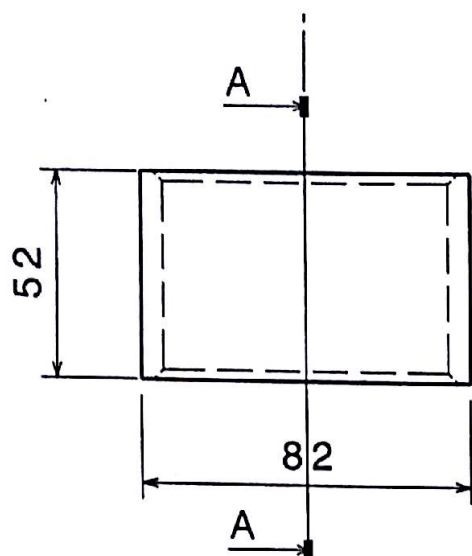
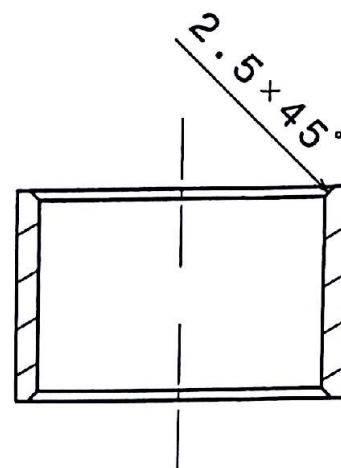


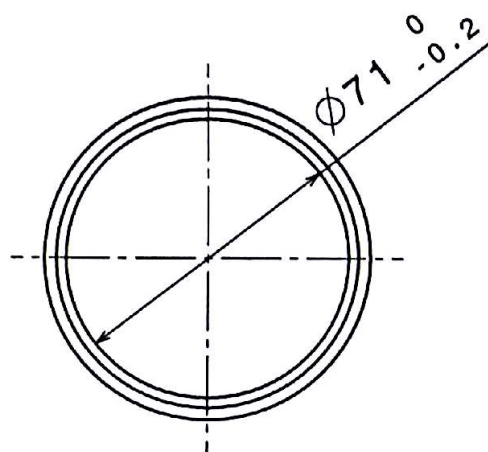
1	2	3	4
		MNF	



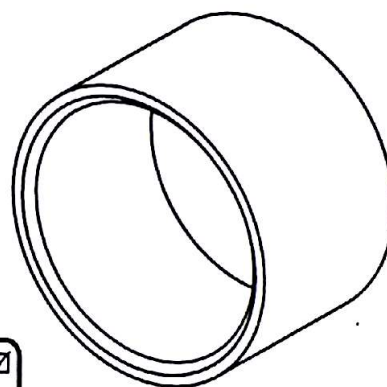
Front view
Scale: 1:2



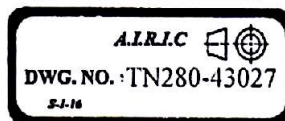
Section view A-A
Scale: 1:2

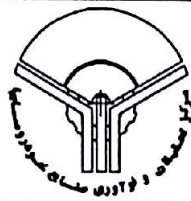


Top view
Scale: 1:2



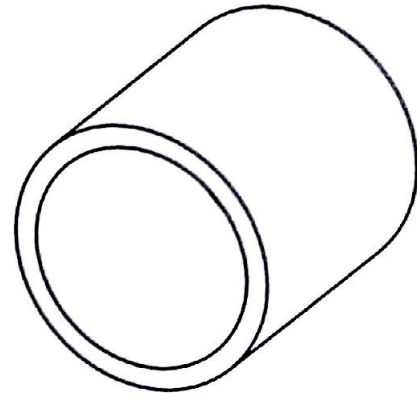
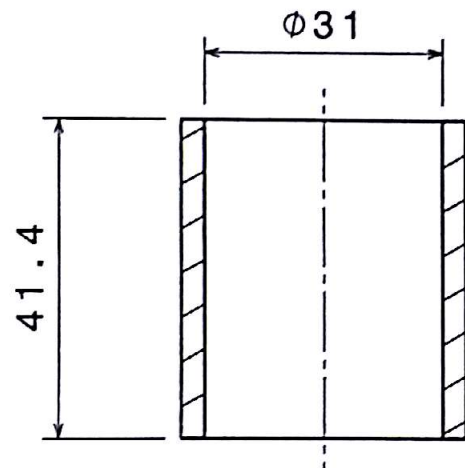
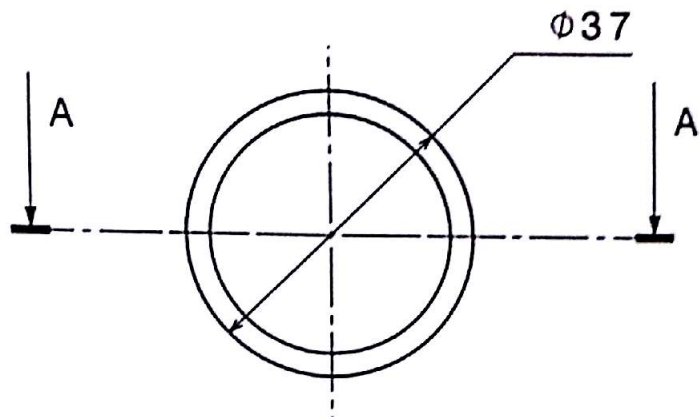
Isometric view
Scale: 1:2

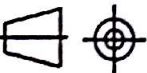




Model	SP100								
Car Model	N280								
Issue Date	95.06.03			NO.	ECN NO.	Date	Changed By	Signature	Checked
Material	ST52			DWG No.			TN280-43027		
- mm	- kg	Free	Unit: mm	Name			LONGITUDINAL ARM BUSH		
Thickness	Weight	Scale	Tol. : m ISO 2768-1.2	Ref. Part No.			TN280-43027		
Date				Dept.			Chassis Design		
Signature				Name			H.Khosravi R.Masjoodi A.Bahri Sh.Shahriari		
Designed	Drawn	DWG Check	Confirmed	Approved			 AUTOMOTIVE INDUSTRIES RESEARCH & INNOVATION CENTER OF AIRIC SAIPA Title No. : 85-4-034		

1	2	mm	0	10	20	30	40	50	60	70	80	90	100
---	---	----	---	----	----	----	----	----	----	----	----	----	-----

1.6



				WEIGHT 0.103kg	MATERIAL ST 52	H.T HRC	Q.T.Y 2	PROJ. NAME: LWR ARM
					SHEET 1 of 1	SCALE 1:1	FORMAT A4	PART NAME: LWR ARM SMALL BUSH
								DRG NO:
								FILE NAME
				DESIGNED				
				DRAWN		R.Jahanbin		
				CHECKED		H.Khodayari		
				CONTROLLED		A.Naseri		
				APPROVED		H.soltani		



AIDCO PRESS

شرکت صنایع فلزی پارس توسعه صنایع خودرو
۱ سولای فارس

